

# SPOTTED GUM DECKING

*Corymbia Maculata, Corymbia Citroedora,  
Eucalyptus Henryi*

*Spotted Gum is a tough timber which has been weathered by harsh conditions. This weathering produces spotted gum's unique characteristics: gum veins and a wavy grain which results in a 'fiddleback' effect.*

*Architects and Specifiers favour Spotted Gum for its individuality and stunning colour palette which ranges from light browns to dark reds.*

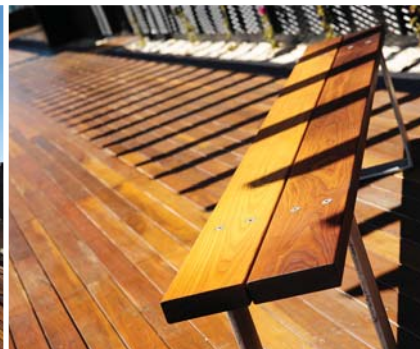
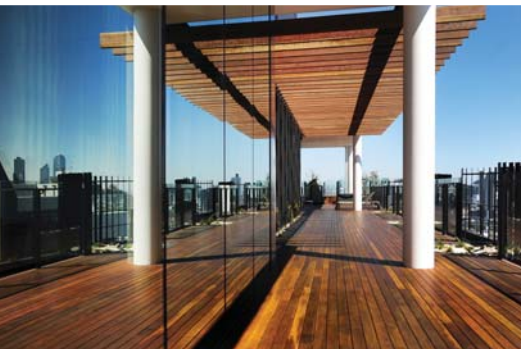
*A premium decking timber, Spotted Gum is highly durable and an ideal choice for a variety of decking applications.*

*Spotted Gum provides good fire resistance, and is one of seven hardwood species that was found suitable for construction in bushfire prone areas.*

*Britton Timbers supplies Spotted Gum decking Australia-wide from our Melbourne, Sydney and Brisbane distribution centres and overseas markets through Britton Timbers International.*

**Sizes:** 86mm x 19mm Pencil Round Four Corners  
136mm x 19mm Pencil Round Four Corners

**BAL:** Bushfire Attack Level 12.5, 19 & 29  
All AS 3959 Required Applications



## TECHNICAL INFORMATION

Density (kg/m3 dry)	950	Tangential Shrinkage %	6	Machining	Good
Specific Gravity	0.95	Hardness (Janka) (kN)	11	Resistance to Split in Nailing	Good
Modulus of Rupture (MPa dry)	150	Finish	Good	Resistance to Split in Screwing	Good
Modulus of Elasticity (GPa dry)	23	Stability	Fair	Gluing	Poor
Radial Shrinkage %	4.5	Sapwood Lyctid Susceptible	Yes	Growing Region	NSW & QLD
				Availability	Available



www.brittontimbers.com.au

New South Wales

116-118 Jemma Rd  
Prestons NSW 2170

☎ 02 8783 9900

Victoria

25 Gaine Rd  
Dandenong VIC 3175

☎ 03 8769 7111

Queensland

29 Sodium St  
Narangba QLD 4504

☎ 07 3888 3351

Tasmania

3 Brittons Rd  
Smithton TAS 7330

☎ 03 6452 2522

