

AUSTRALIAN NATIVE
BY HURFORD FLOORING

Emphasising two of Australia's much loved classic species, Blackbutt & Spotted Gum.

The Australian Native pre-finished range features a square edge profile and a matt finish, to achieve a floor that's earthy and effortless. Consistent in quality and structural stability, Australian Native is constructed using a low shrinkage, ecofriendly Hevea core and a tough Australian hardwood lamella. The production incorporates a licensed Välinge locking system, which uses a single action installation method, saving time and creating a floor that can be enjoyed instantly.

Utilising the latest in environmentally friendly UV coatings, the 6 coat system delivers a floor finish similar to a stylish oiled floor but with the durability and protection a UV lacquer offers. Australian Native engineered flooring provides a practical yet stylish option suited for day-to-day use in most applications.

In addition to Blackbutt and Spotted Gum, the Australian Native range offers Rustic Blackbutt. A full featured floor with prominent gum veins, gum pockets, trails, burls and borer holes. The feature does not interfere with the structural integrity of the floor, but offers a glimpse of the intense life in the Australian Bush; drought, ambrosia attack and fierce wildfires are just some of the elements a tree needs to endure to produce these beautiful and interesting features. An impressive choice, adding value and character to any interior.

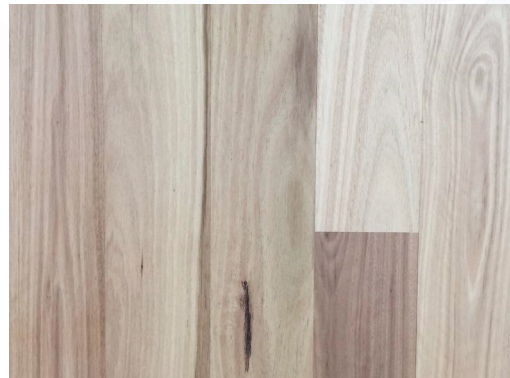
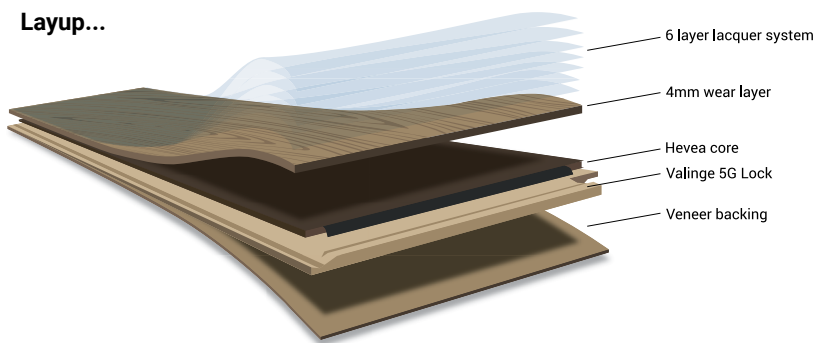
Hurford's superior kiln drying processes help to minimise lamella movement, preventing potential stability issues like twisting, cupping and checking.

Specifications...

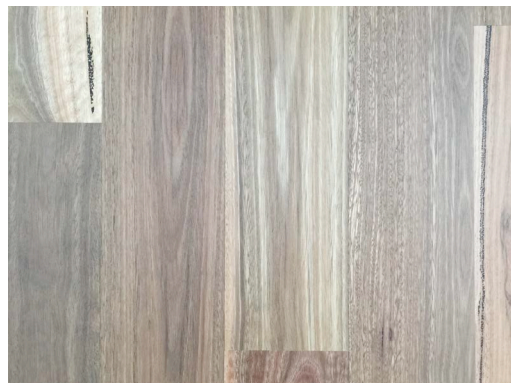
Species:	Blackbutt, Spotted Gum & Rustic Blackbutt*
Core Material:	Hevea
Locking System:	Välinge 5G Gluesless Joining System
Width:	132mm and 180mm
Thickness:	13.5mm
Wear Layer:	4mm
Length:	1,820mm & 2,130mm
Surface:	Smooth texture
Coating:	UV cured 6 coat Klumpp system
Finish:	Matt 10% Gloss
Coverage 132mm:	1,820mm - 1.922m ² and 2,130mm - 2.249m ²
Coverage 180mm:	1,820mm - 1.966m ² and 2,130mm - 2.300m ²
Packaging 132mm:	8 rows per box, maximum of 3 nested rows
Packaging 180mm:	6 rows per box, maximum of 2 nested rows
Matching accessories:	EVERwalk & HUSHwalk Underlays, Trims & Scotia

*Rustic Blackbutt available in 132mm only.

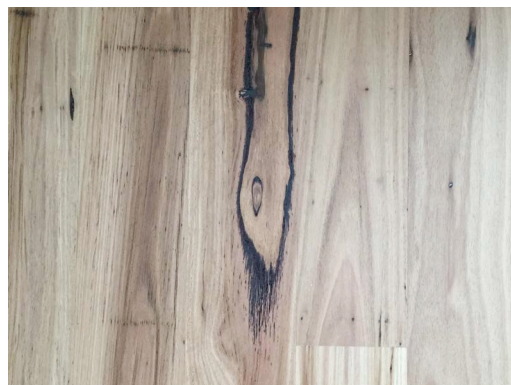
Layup...



Blackbutt



Spotted Gum



Rustic Blackbutt

